

Checklist: Clean-up of Vomiting and Diarrheal Events



- Close or block off the affected area.



- Put on disposable plastic apron, face mask, shoe covers and disposable gloves.



- Sprinkle absorbent material onto the spill until the fluid is fully absorbed and jelled.



- Spray EPA-approved disinfectant to the spill, **following the labeled directions**, until it is completely covered.



- Using a disposable shovel and paper towels, completely pick up all of the jelled substance.



- Place the jelled substance in a heavy-duty trash bag and seal the bag.
Place this bag into a second trash bag (leave open).



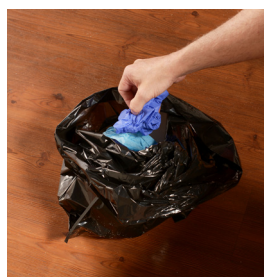
- Use paper towels and additional disinfectant to clean up surrounding areas that may have been affected.

Place all soiled paper towels into the outer trash bag.



- Once more, apply disinfectant, **following the labeled directions**.

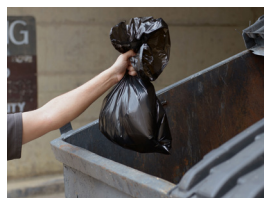
Wash, rinse, and sanitize all food contact surfaces in affected area.



- Remove the apron and shoe covers and place them into the outer trash bag.

Remove gloves and dispose of into outer trash bag.

Find a second employee wearing proper gloves to open doors and the dumpster to prevent cross-contamination.



- Seal the bag tightly and place in the dumpster outside.



- Once the affected area is dry, remove wet floor sign and reopen the area.